
Project Attribute Strict Documentation

Release VERSION

Openlabs

April 13, 2015

1	Product Attribute Description	3
1.1	Introduction	3
1.2	Creating a New Product	3
1.3	Variants	4
1.4	Creating Variants	5
1.5	Product Attributes	5
1.6	Attribute Sets	5
1.7	Creation of Attributes	5
2	Indices and tables	17

Contents:

Product Attribute Description

This module is used for adding attributes to products. This documentation describes how to add attributes to variants and show combination of products on a single product template.

- [Introduction](#)
- [Creating a New Product](#)
- [Variants](#)
- [Creating new variants](#)
- [Product Attributes](#)
- [Attribute Sets](#)
- [Attribute Creation](#)

1.1 Introduction

Tryton uses two models for managing products:

- Product Template
- Variants

A product template is a logical grouping of closely related products. An example would be a phone and its different features like brand, capacity and colour would be variants. The basic idea is that a template cannot be purchased, manufactured or sold, only its variant can be. On the other hand, a product template is advertised and not its variant.

1.2 Creating a New Product

To create new product, go to `Product >> Products`. Click on new icon to create new record.

The following fields are present on the product template:

Name	Description
Name	Name of product
Type	The value can be Services, Goods and Assets
Category	Where product belongs to.
Cost Price	This can be fixed or average. This tells how cost price should be updated. The fixed price products have unchanged prices and average price depicts the average cost of all items in stock.
Default UOM	Default UOM for this product.
Active	Used to disable a product.
Consumable	Used to make product consumable.
Set	The product attributes can be added from here.
Code	Specific Code given to product.

1.3 Variants

A product variant is the Stock Keeping Unit (SKU) for the product template. While templates are virtual grouping of related products, the variants are real world products. Generally there are minor varieties in the templates. As a result, there are different SKUs present.

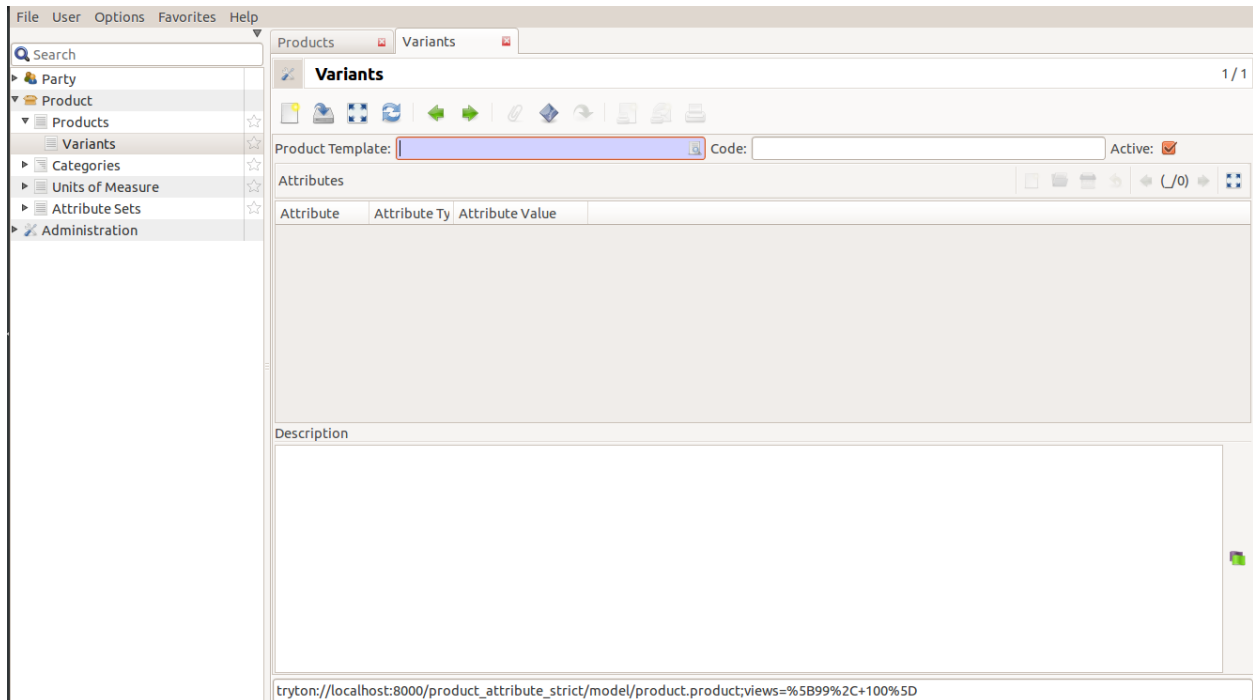
For example, in the phone category, the following would be the variants:

Variant	Color	Capacity
Code 1	Black	8 GB
Code 2	Black	16 GB
Code 3	White	8 GB
Code 4	White	16 GB

The different characteristics which make up variations are known as Attributes.

1.4 Creating Variants

Go to Product>> Products >> Variants, and click on new icon to create a new record.



The variants window has the following fields:

Name	Description
Product Template	The template of which the product is a variation of.
Code	A unique code for the product.
Active	The product can be disabled with this.
Attributes	Attributes of the product chosen.

1.5 Product Attributes

The attributes are the collective characteristics of prouduct variants. For example, in case of a phone, its attributes will be capacity, brand, color etc.

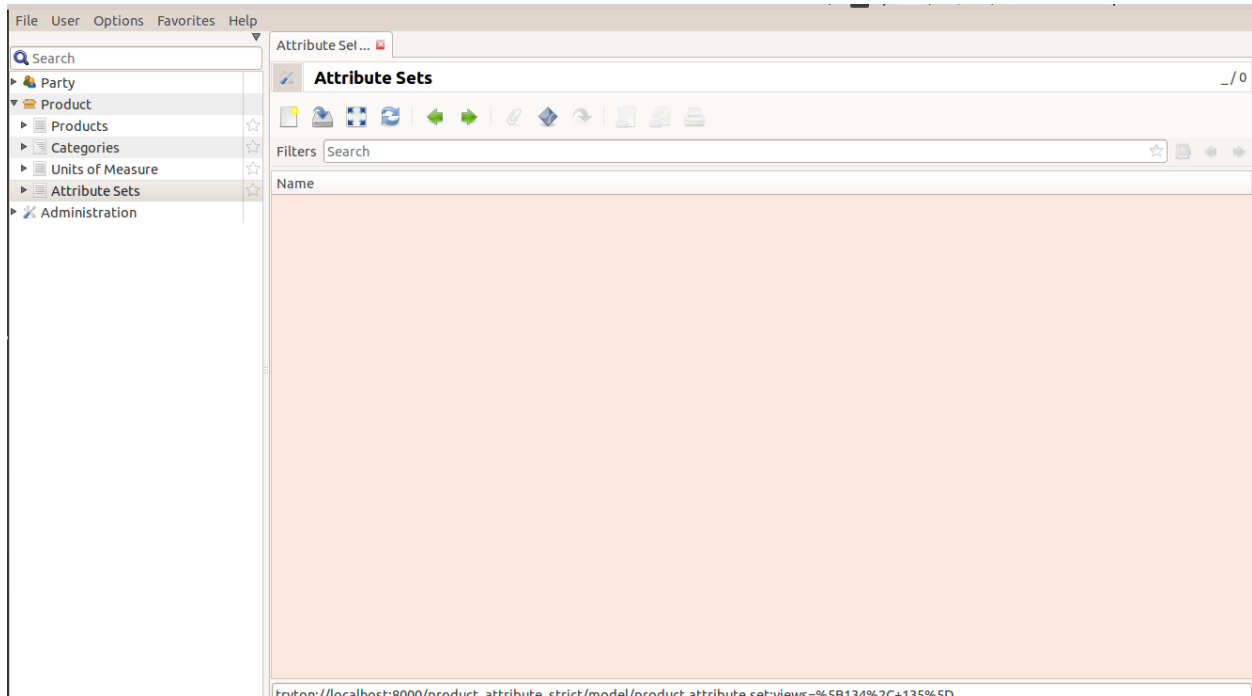
1.6 Attribute Sets

It is a collection of attributes. These are the collective characteristics of variants. In case of a phone, its attributes will be brand, color, capacity etc.

1.7 Creation of Attributes

Note: We will use the same example of variants of a smartphone for illustration purposes.

1. Click on Product>> Attribute Sets to create a new attribute.



2. Click on Create a new record.
3. Add Name of the attribute. For illustrative purposes, we will go with *Phone*.
Click on *Create a new record* in front of attributes.
4. Click on New to create a new record.
5. In the Name field, add Colour. From the drop down menu, click on drop-down and choose Selection.
6. Click Add a new record next to selection.
7. In the attribute name field, add *Black* and click *Ok*.

Follow same steps to add other colors. Once done, click *Ok*. You will be able to see attribute added.

Repeat the same steps for adding Brand and Capacity.

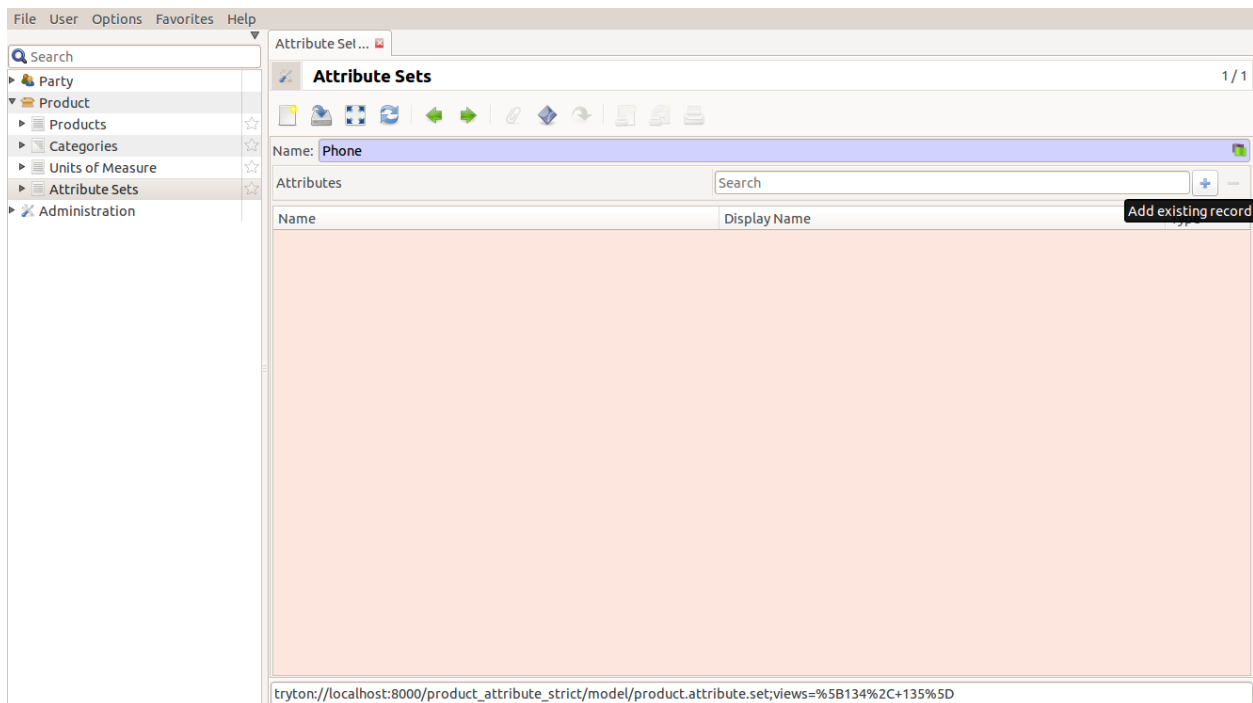
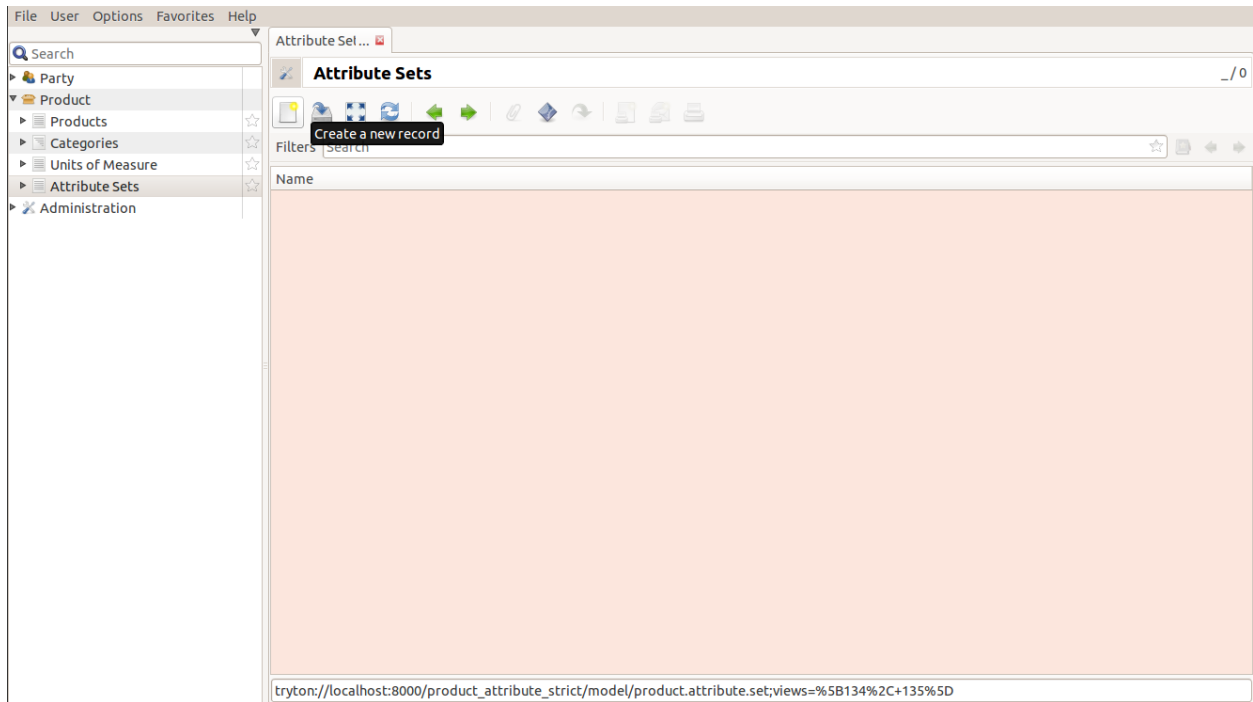
Click on Save this record.

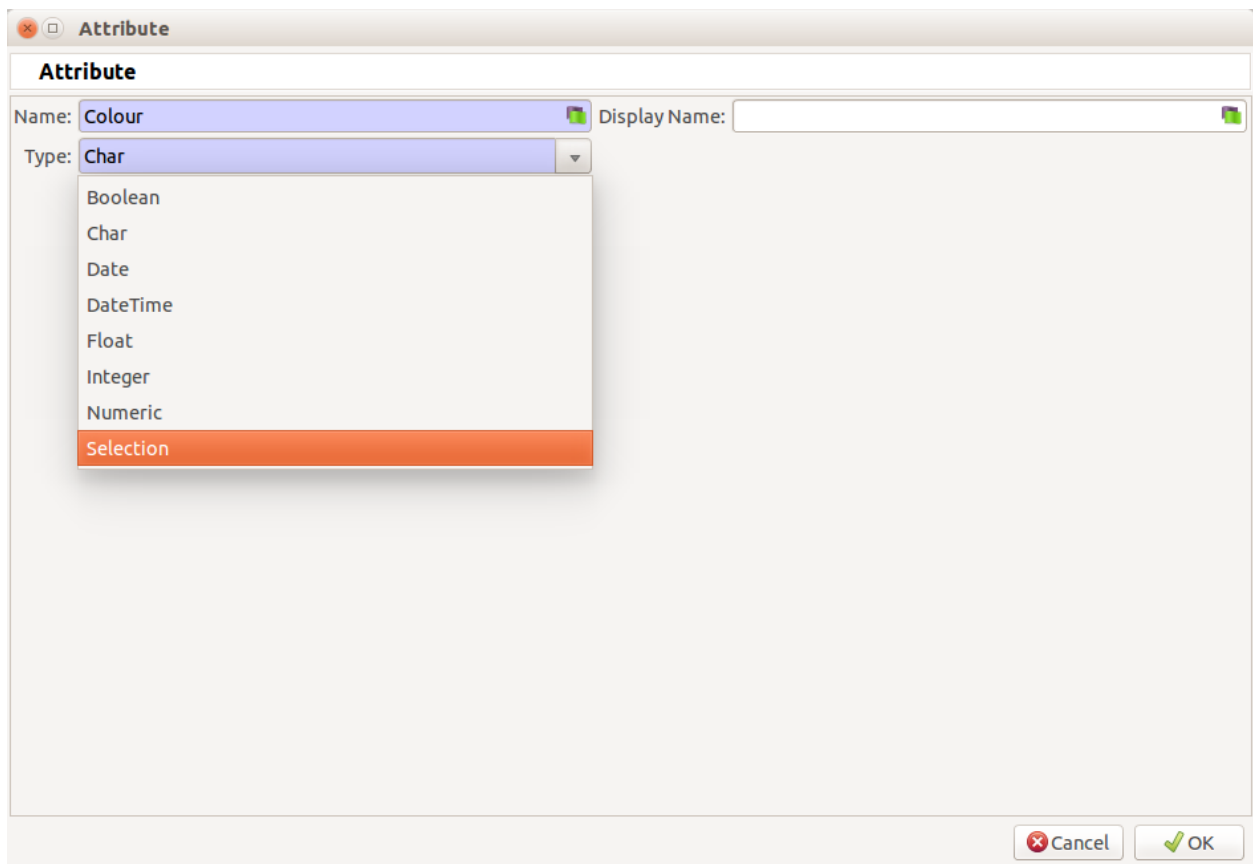
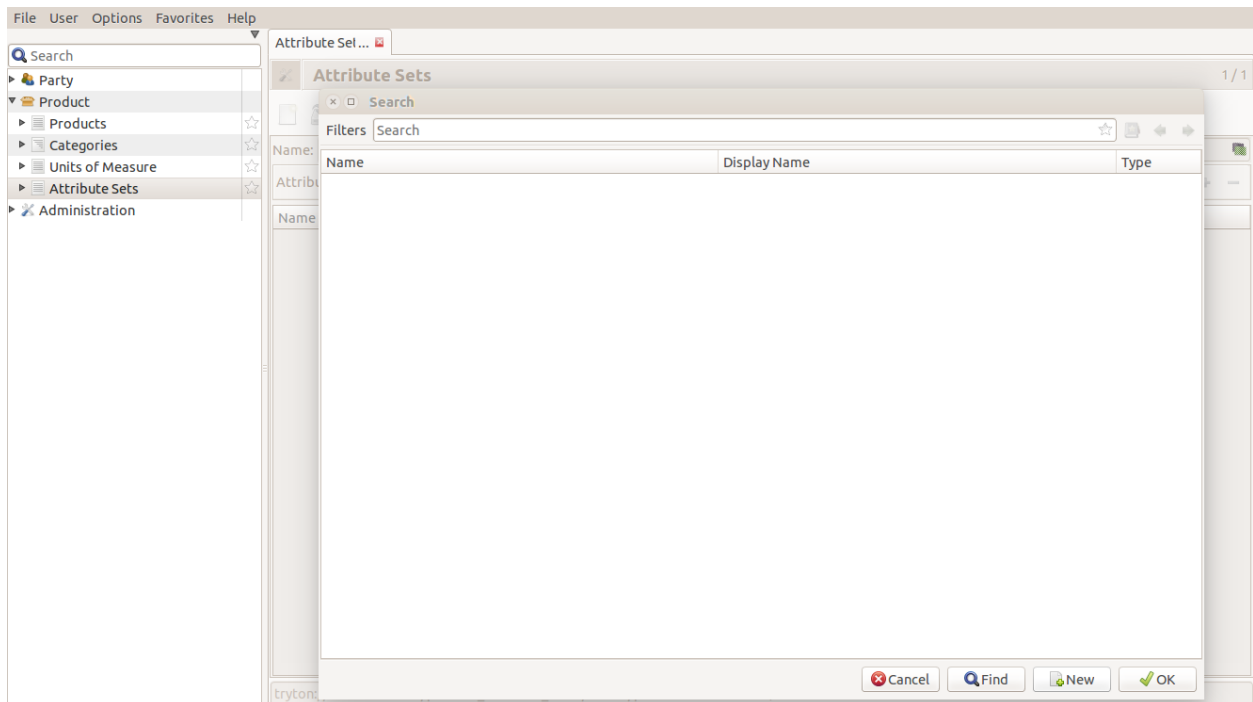
8. Double click on *Product* tab and click on Create a new record.
9. Let us now see how the attribute sets we created work. In the window that opens, add details of products and click on Search a record in the *Sets* tab.

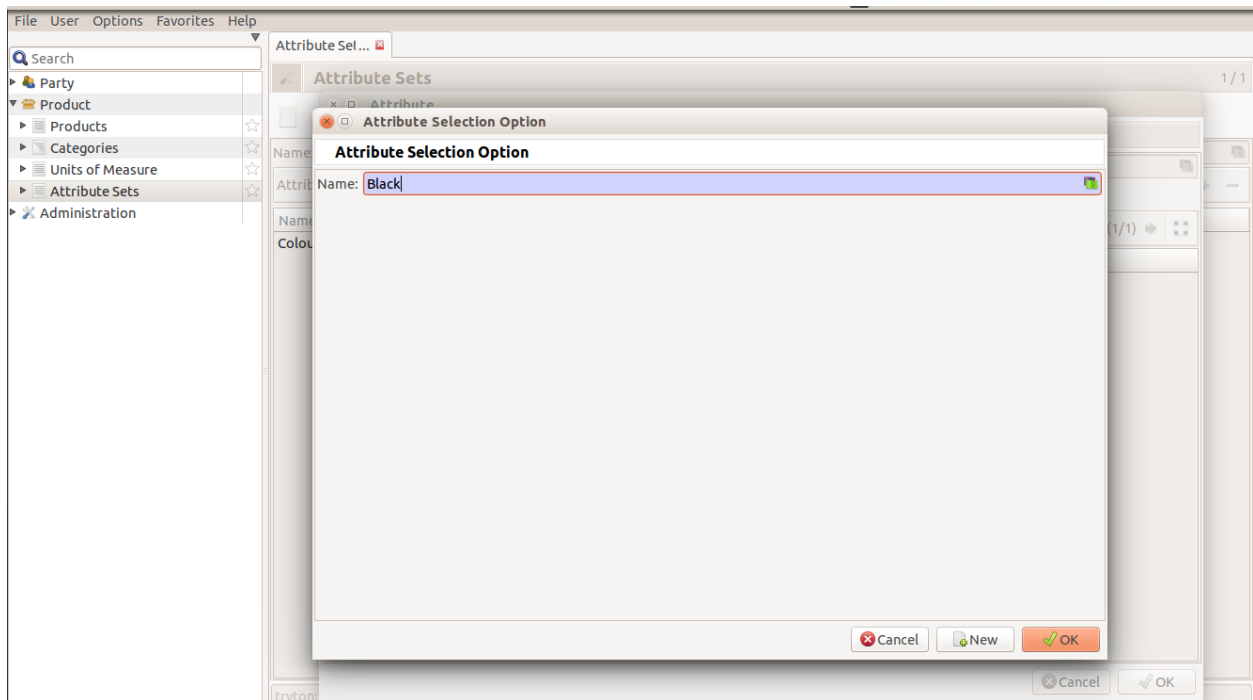
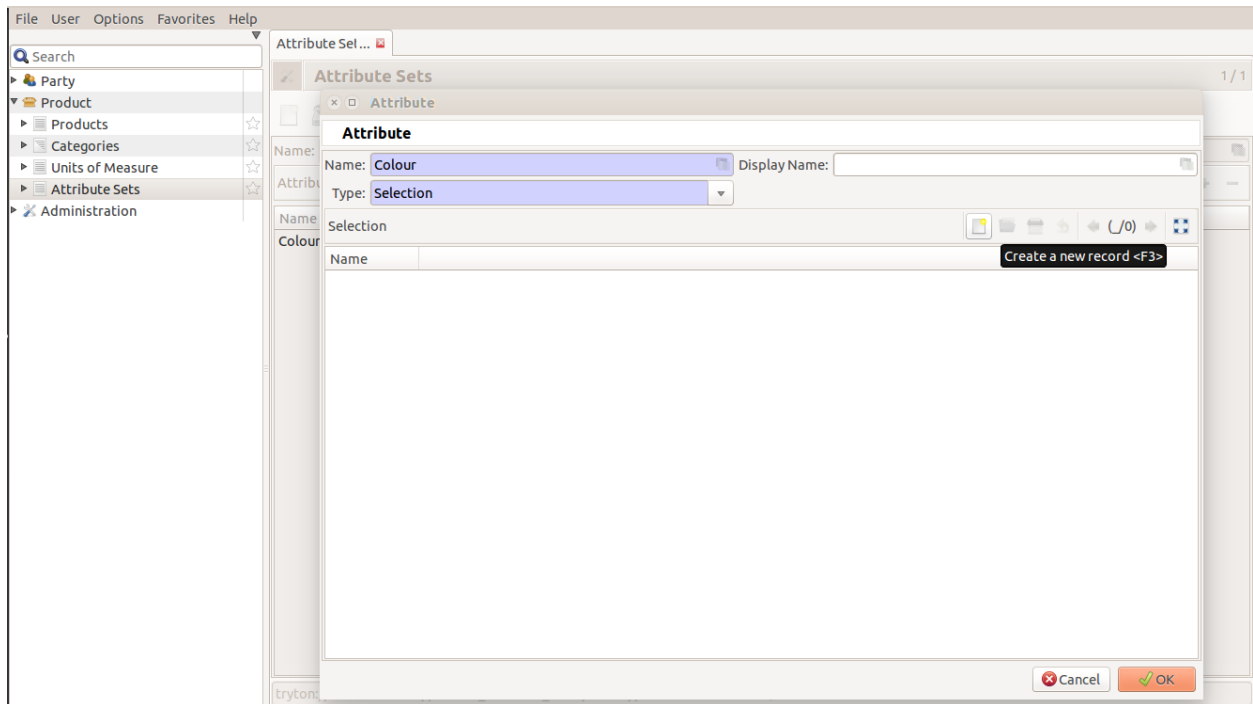
You can see the attribute set we created by the name *Phone*. Select and hit *Ok*.

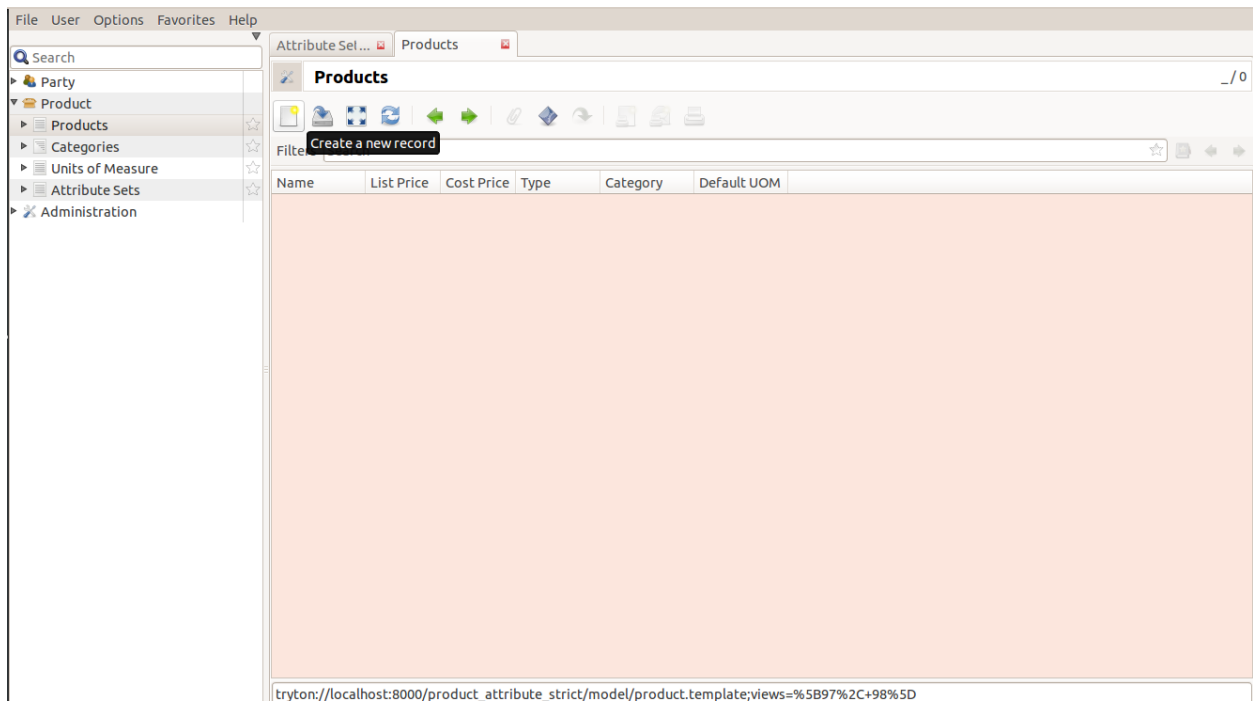
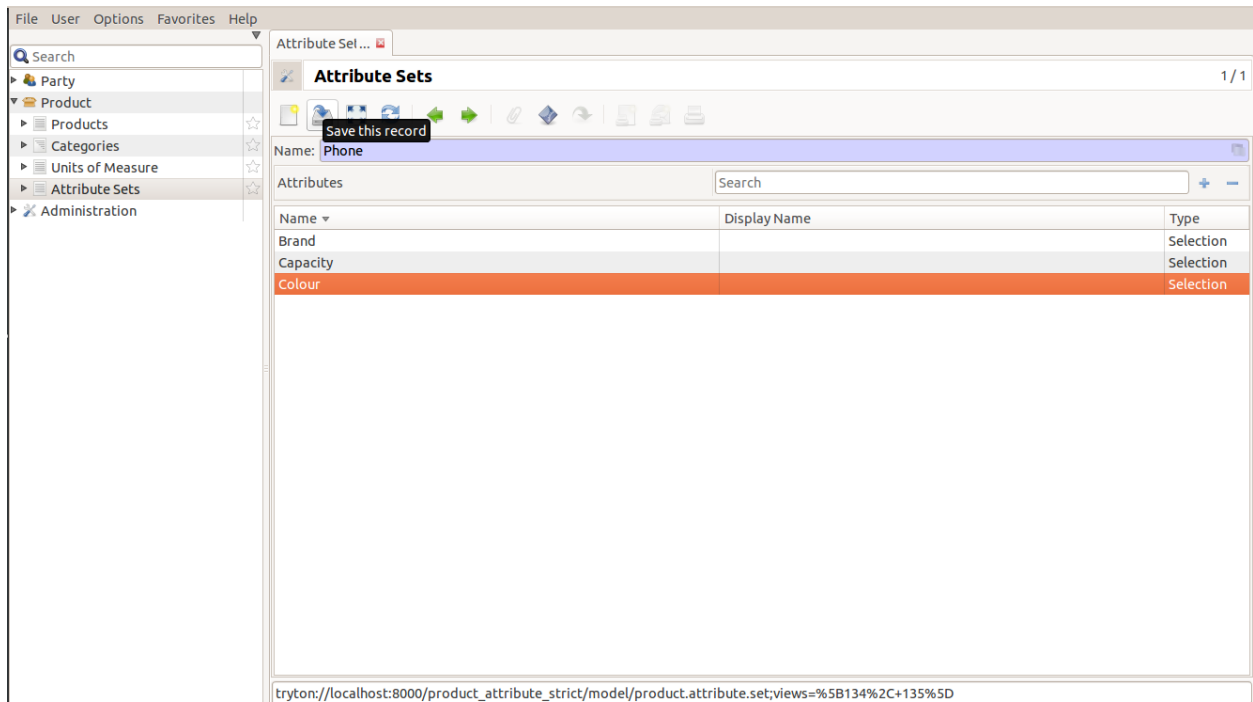
10. Click on *Create a new record* next to Attribute.
11. In the window that opens, click on *Search a new record*.
12. You can now see the attributes we defined. Select any one and hit *OK*.
13. In Value Selection field, click on Search a new record.
14. All the enlisted colours can be seen. Select any one and click *Ok*.

Repeat the above steps for specifying the Brand and Capacity too. Once done, save your records.









File User Options Favorites Help

Search

- Party
- Product
 - Products
 - Categories
 - Units of Measure
 - Attribute Sets
- Administration

Attribute Sel... Products 1 / 1

Products

Name: **Smartphone** Active: ☒

General

Type: **Goods** Consumable: ☐

Category: Default UOM: **Unit**

List Price: **23.0000**

Cost Price: **20.0000** Cost Method: **Fixed**

Set: Search a record <F2>

Variants

Code: **1** Active: ☒

Attributes

Attribute	Attribute Ty	Attribute Val
-----------	--------------	---------------

Description

tryton://localhost:8000/product_attribute_strict/model/product.template;views=%5B97%2C+98%5D

File User Options Favorites Help

Search

- Party
- Product
 - Products
 - Categories
 - Units of Measure
 - Attribute Sets
- Administration

Attribute Sel... Products 1 / 1

Products

Name: **Smartphone** Active: ☒

General

Type: **Goods** Consumable: ☐

Category: Default UOM: **Unit**

List Price: **23.0000**

Cost Price: **20.0000** Cost Method: **Fixed**

Set: Search a record <F2>

Variants

Code: **1** Active: ☒

Attributes

Attribute	Attribute Ty	Attribute Val
-----------	--------------	---------------

Description

tryton://localhost:8000/product_attribute_strict/model/product.template;views=%5B97%2C+98%5D

Search

Filters Search

Name
Phone

Cancel Find New OK

File User Options Favorites Help

Search

Party

Product

Products

Categories

Units of Measure

Attribute Sets

Administration

Attribute Sel... Products 1/1

Products

Name: **Smartphone** Active: ☒

General

Type: **Goods** Consumable: ☐

Category: Default UOM: **Unit**

List Price: **23.0000**

Cost Price: **20.0000** Cost Method: **Fixed**

Set: **Phone**

Variants (1/1)

Code: **1** Active: ☒

Attributes

Attribute	Attribute Ty	Attribute Val
-----------	--------------	---------------

Create a new record <F3>

Description

tryton://localhost:8000/product_attribute_strict/model/product.template;views=%5B97%2C+98%5D

File User Options Favorites Help

Search

Party

Product

Products

Categories

Units of Measure

Attribute Sets

Administration

Attribute Sel... Products 1/1

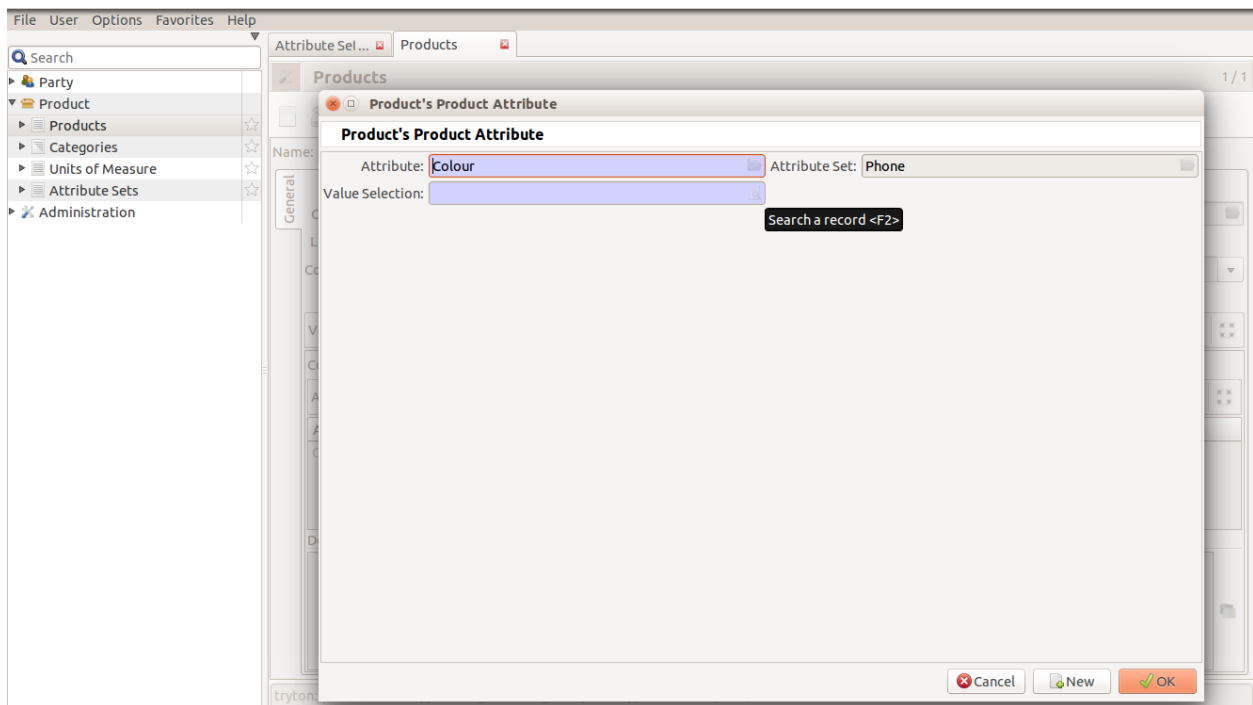
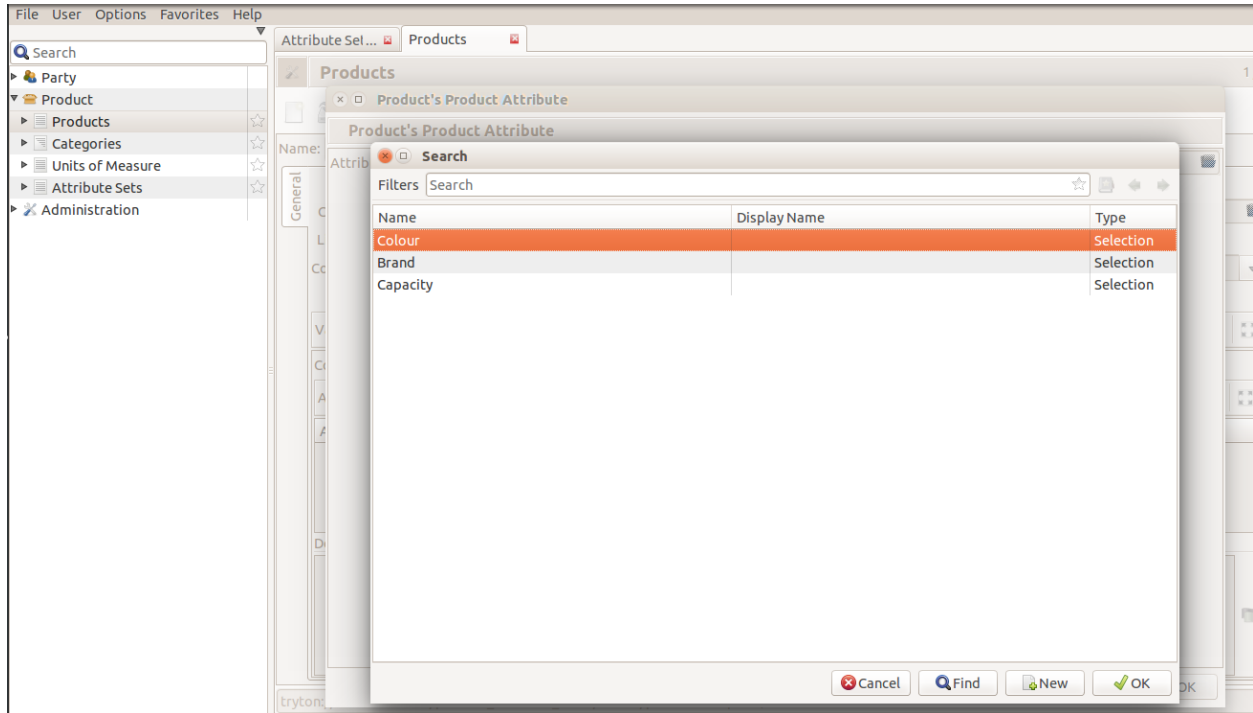
Product's Product Attribute

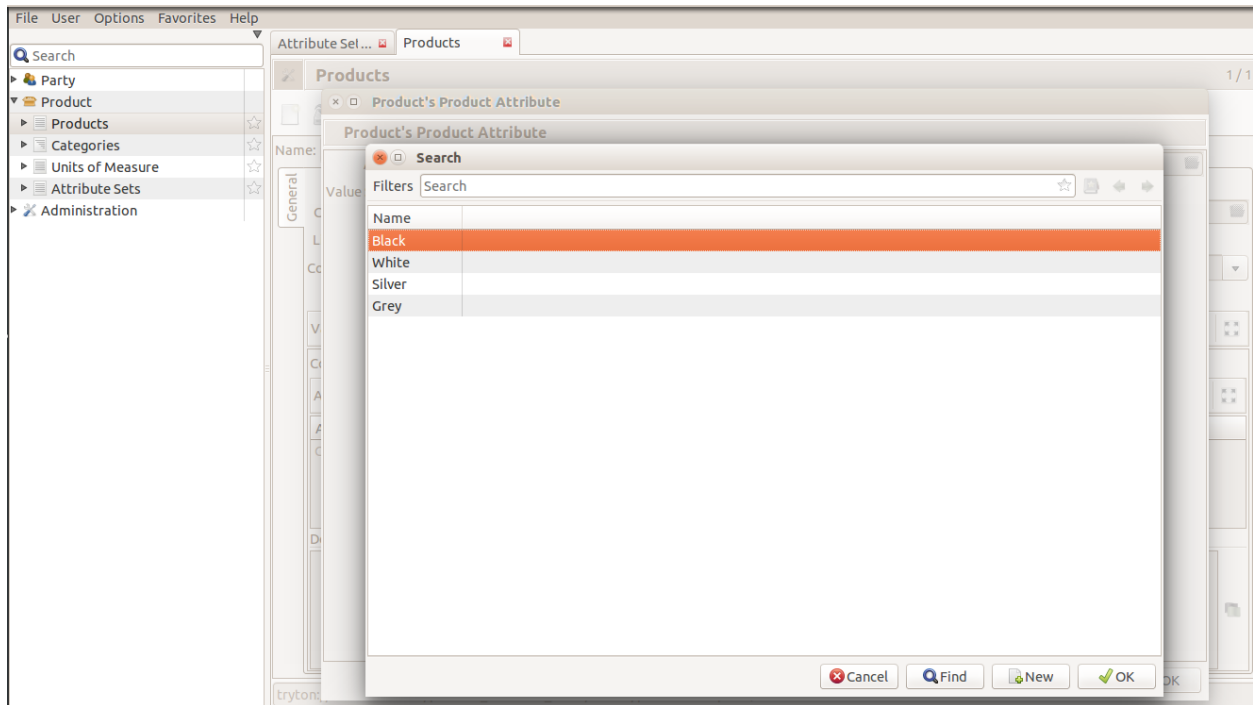
Name: **Smartphone** Active: ☒

Attribute: **Phone** Attribute Set: **Phone**

Search a record <F2>

Cancel New OK





15. If you Switch views, you can see the specifications you selected.

File User Options Favorites Help

Search

Party

Product

Products

Categories

Units of Measure

Attribute Sets

Administration

Attribute Set... Products 1 / 1

Products

Name: **Smartphone** Active: ☒

General

Type: **Goods** Consumable: ☐

Category: Default UOM: **Unit**

List Price: **23.0000**

Cost Price: **20.0000** Cost Method: **Fixed**

Set: **Phone**

Variants (1/1)

Code: **1** Active: ☒

Attributes (2/3)

Attribute	Attribute Ty	Attribute Value
Colour	Selection	
Brand	Selection	
Capacity	Selection	

Description

Switch

tryton://localhost:8000/product_attribute_strict/model/product.template;views=%5B97%2C+98%5D

File User Options Favorites Help

Search

Party

Product

Products

Categories

Units of Measure

Attribute Sets

Administration

Attribute Set... Products 1 / 1

Products

Name: **Smartphone** Active: ☒

General

Type: **Goods** Consumable: ☐

Category: Default UOM: **Unit**

List Price: **23.0000**

Cost Price: **20.0000** Cost Method: **Fixed**

Set: **Phone**

Variants (1/1)

Code: **1** Active: ☒

Attributes (2/3)

Attribute: **Brand** Attribute Set: **Phone**

Value Selection: **Sony**

Description

tryton://localhost:8000/product_attribute_strict/model/product.template;views=%5B97%2C+98%5D

Indices and tables

- *genindex*
- *modindex*
- *search*